



**TEL: 1300 METALS**  
**[www.atlassteels.com.au](http://www.atlassteels.com.au)**

# Product Summary Guide



## Stainless Steel Flat Product

### Stainless Sheet, Coil & Strip

Grades: 304, 304/304L, 316, 316/316L, 409, 4003/Atlas CR12, Atlas CR12Ti, 430, 444, F205  
 Thickness: 0.45mm to <5.0mm  
 Coil Width: 914, 1219, 1500, 2000mm  
 Finish: 2B, No. 4, BA, No. 1  
 Coating: PE

### Stainless Plate

Grades: 304/304L, 316/316L, 321, 321H, 2205, 253MA  
 4003/Atlas CR12, Atlas CR12Ti  
 Thickness: 5.0 to 50.0mm  
 Width: 1250 (3CR12), 1500, 2000, 2500mm  
 Length: 6.0, 7.5, 8.0mm  
 Finish: 2B, No. 1



### Stainless Chequer (Floor) Plate

Grades: 304  
 Thickness: 3.18, 4.76, 6.0mm  
 Width: 1219, 1250 (6.0mm only)  
 Length: 2438, 3048  
 2500 (6.0mm only)

## Stainless Steel Tubular Product

### Stainless Pipe & Fittings

Pipe: Welded & Seamless in round  
 Size Range: DN6 – DN600  
 Grades: 304/304L, 316/316L, 2205  
 Wall Thickness: Sch 10S, 40S, 80S  
 Fittings: Butt weld, screwed & socketed, flanges (ANSI, Table E & Table D)

### Stainless Tube & Fittings

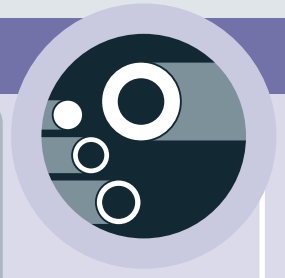
Tube: Round, square, rectangular  
 Size Range: Round 4.76mm OD to 203.2mm OD;  
 Spiral welded 76.2mm OD to 1016mm OD  
 Square 12.7mm to 152.6mm A/F  
 Rectangular 25.4mm x 12.7mm to 203.2mm x 101.6mm  
 Grades: 304, 316, 304/304L, 316/316L, 2205  
 Wall Thickness: 0.33 to 5.0mm  
 Fittings: BSM, tri-clamp, butt welding, flanges, clamps to suit



## Carbon Steel Pipe and Fittings

### Carbon Steel Pipe & Fittings

Pipe: ERW and Seamless  
 Size Range: DN15 – DN600  
 Wall Thickness: Std Wt, XS, XXS, Sch 160  
 Fittings: Buttwelding  
 ANSI Flanges  
 AS2129 Plate Steel Flanges Tables D, E and H  
 Black and Galv. Fittings to EN10241 (BS 1740)



## Carbon Steel RHS and Pipe

### Carbon Steel RHS & Pipe

RHS: Painted and Galvanised  
 Size Range: 13x13 – 400x400 Square Hollow Section  
 38x25 – 250x150 Rectangular Hollow Section  
 Grades: AS1163 C350L0 Painted  
 AS1163 C350L0/C450L0 Galvanised  
 Pipe: Painted and Galvanised  
 Size Range: DN20 – DN150  
 Grade: AS1074, AS1163 Painted and Galvanised  
 BS1387 Hot Dip Galvanised



## Stainless Steel Bar and Sections

Round Bar: 3.0 to 350mm diameter  
 Square Bar: 6.0 to 76.2mm A/F  
 Hexagonal Bar: 6.35 to 63.5mm A/F  
 Flat Bar: 12 to 150mm wide; 3 to 25mm thick  
 Equal Angle: 20 to 100mm section; 3.0mm to 12.0mm thick  
 Channels: 80 x 40mm to 150 x 75mm section; 5.0 to 6.0mm thick  
 Hollow Bar: 32mm OD x 16mm ID to 250mm OD x 200mm ID  
 Wire: 1.0 to 16.0mm diameter  
 Grades: 303, 304, 304L, 316, 316L, 321, 416, 431, 2205, 630  
 Condition: Hardened & tempered, annealed  
 Finishes: Cold (bright) drawn, centreless ground, hot rolled, smooth turned, peeled, slit rolled edge, hot rolled annealed & pickled



## Engineering Steel Bar

### General Purpose Bright bar

Round:	3.17mm to 203.2mm diameter
Square:	3mm to 130mm A/F
Hexagonal:	4.76mm to 90mm A/F
Flat:	9.52 x 3.17mm to 152.4 x 76.2mm
Finishes:	Cold drawn, smooth turned & polished, centreless ground
Grades:	M1020/M1030, 1040, 1045, 1214FM, 12L14FM, U1004

### Carbon & Alloy Steels

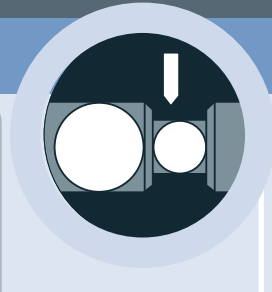
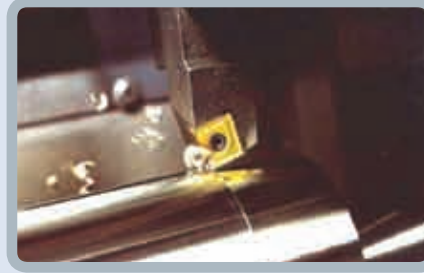
Size:	10mm to 550mm diameter
Grades:	1045, 4140, 4340, En25, En26

### Case Hardening Steels

Size:	10mm to 400mm diameter
Grades:	8620H, 17CrNiMo6, En36A, En39B

### Chrome Bar

Size:	19.05mm to 127mm diameter
Grades:	1045, 4140 H&T



### Carbon & Alloy Hollow Bar

Size:	32mm OD x 10mm ID - 406.4mm OD x 306.4mm ID
Grades:	1045, 4140 H&T/Ann

### Cast Iron (solid & hollow)

Size:	30-350mm
Grades:	U250, U300, U400

## Quenched & Tempered and Carbon Steel Plate

### Quenched & Tempered Steel Plate

Steel plate for high strength and abrasive wear resisting applications.

Grades:	80, 400, 450, 500
Thickness:	4, 5, 6, 8, 10, 12, 16, 20, 25, 32, 40, 50, 60, 65, 70, 75, 80, 90, 100, 120, 140mm
Sizes:	1525 x 6000, 1525 x 8000, 1900 x 6000, 2400 x 6000, 2485 x 6000, 2485 x 8000, 3100 x 8000, 2500 x 8000, 2500 x 9600mm

### Carbon Steel Plate

Mild and structural grades to suit a wide range of fabrication options.

Grades:	AS/NZS 3678-250, AS/NZS 3678-350
Thickness:	5, 6, 8, 10, 12, 16, 20, 25, 28, 32, 36, 40, 50mm



## Aluminium Flat Product

### Aluminium Sheet & Coil

Alloys:	1145, 5005, 5052, 5251
Tempers:	0, H32, H34, H38
Thickness:	0.6mm to 6.0mm
Width:	900, 1200, 1500, 2515mm
Length:	1800, 2400, 3000mm
Finish:	Mill
Coating:	PE Coating
	Please enquire re: Cut to size options.

### Aluminium Plate

Alloy:	5083
Temper:	0, H116, H321
Thickness:	3, 4, 5, 6, 8, 10, 12, 16, 20, 25mm
Width:	1200, 1525, 1830mm
Length:	2400, 6100, 9000mm
	Please enquire re: Plasma cutting options.



### Aluminium Treadplate

Alloys:	3003, 5052, 5251
Tempers:	H224
Thickness:	1.6mm to 6.0mm
Width:	1200, 1500mm
Length:	2400, 3000, 3600, 6000mm
Finish:	5 Bar Mill finish (5052) 1 Bar Propellor bright finish (3003)



## Other Products

High Nickel Alloys for severe corrosion resisting and high temperature applications

Hydraulic & Pneumatic Tube

Tool Steels



## Product Support Services

### Processing Services

- Plasma cutting of plate
- Oxy cutting of carbon steel plate
- CAD-CAM drawing of plate cutting profiles
- Bandsawing bar and pipe
- Sheet cut to length & blanking
- Shearing of sheet
- Tube & pipe polishing
- Coil polishing, slitting & recoiling

### Project Management

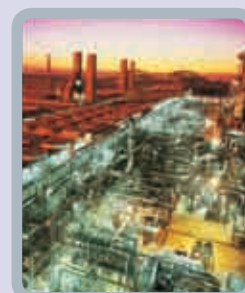
- Energy Generation
- Food & Beverage Processing
- Pharmaceutical
- Mining
- Minerals processing
- Petrochemical
- Offshore Petroleum
- Oil & Gas
- Water treatment
- Desalination
- Sewerage & Effluent Treatment
- Transport Infrastructure

### Technical Support

- Metallurgical assistance
- Metal testing
- Grade selection for corrosion, heat, wear etc
- Specification interpretation
- Fabrication advice
- Provision of technical literature
- Liaison with mills

### QA Accreditation

- ISO 9001
- Accredited for 20 years





#### VICTORIA

##### Melbourne

13-23 Lynch Road  
BROOKLYN VIC 3012  
Telephone: (03) 9272 9999  
Facsimile: (03) 9272 9950  
Email: vicsales@atlassteels.com.au

##### Shepparton

14 McHarry Place  
SHEPPARTON VIC 3630  
Telephone: (03) 5831 5499  
Facsimile: (03) 5831 7955  
Email: vicsales@atlassteels.com.au

##### Wodonga

16 Moloney Drive  
WODONGA VIC 3690  
Telephone: (02) 6056 7211  
Facsimile: (02) 6056 7944  
Email: vicsales@atlassteels.com.au

#### TASMANIA

##### Launceston

2-4 Derby Street  
MOWBRAY TAS 7248  
Telephone: (03) 6326 6055  
Facsimile: (03) 6326 6145  
Email: vicsales@atlassteels.com.au

#### SOUTH AUSTRALIA

##### Adelaide

9 Capelli Road  
WINGFIELD SA 5013  
Telephone: (08) 8359 1100  
Facsimile: (08) 8359 1122  
Email: sasales@atlassteels.com.au

#### NEW SOUTH WALES

##### Sydney

41 Lyn Parade  
PRESTONS NSW 2170  
Telephone: (02) 9825 7500  
Facsimile: (02) 9825 7510  
Email: nswsales@atlassteels.com.au

##### Newcastle

12 Pippita Close  
BERESFIELD NSW 2322  
Telephone: (02) 4922 5566  
Facsimile: (02) 4922 5565  
Email: nswsales@atlassteels.com.au

#### QUEENSLAND

##### Brisbane

40 Coulson Street  
WACOL QLD 4076  
Telephone: (07) 3246 9999  
Sales: (07) 3246 9988  
Facsimile: (07) 3246 9966  
Email: qldsales@atlassteels.com.au

##### Gladstone

15 Bassett Street  
GLADSTONE QLD 4680  
Telephone: (07) 4976 9088  
Facsimile: (07) 4976 9544  
Email: gladstonesales@atlassteels.com.au

##### Mackay

42A Commercial Avenue  
PAGET QLD 4740  
Telephone: (07) 4952 3455  
Facsimile: (07) 4952 3378  
Email: mackaysales@atlassteels.com.au

##### Townsville

27- 41 Toll Street  
BOHLE QLD 4818  
Telephone: (07) 4774 7316  
Facsimile: (07) 4774 7304  
Email: townsvillesales@atlassteels.com.au

#### WESTERN AUSTRALIA

##### Perth

407 Victoria Road  
MALAGA WA 6090  
Telephone: (08) 9209 9699  
Sales Fax: (08) 9249 2644  
Email: wasales@atlassteels.com.au

#### NORTHERN TERRITORY

##### Darwin

Lot 2847, Pruen Road  
BERRIMAH NT 0828  
Telephone: (08) 8947 2717  
Facsimile: (08) 8947 4010  
Email: ntsales@atlassteels.com.au

#### NEW ZEALAND

##### Auckland

66 Harris Road  
East Tamaki  
Telephone: (09) 634 0179  
Facsimile: (09) 634 0172  
Email: nzsales@atlassteels.co.nz

##### Christchurch

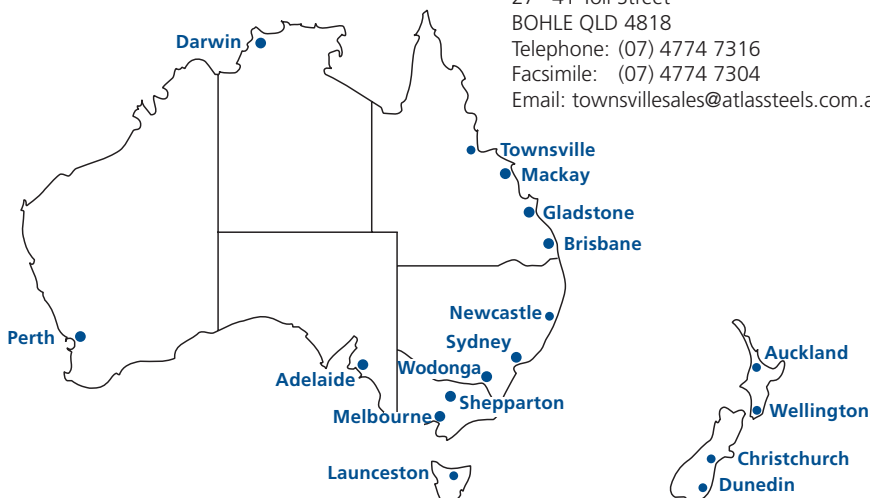
17 Hammersmith Drive  
Sockburn  
Telephone: (03) 977 9000  
Facsimile: (03) 977 9001  
Email: nzsales@atlassteels.co.nz

##### Dunedin

8 Kitchener Street  
DUNEDIN  
Telephone: (03) 477 2793  
Facsimile: (03) 477 1383  
Email: nzsales@atlassteels.co.nz

##### Wellington

2-14 Port Road  
Seaview, Lower Hutt  
Telephone: (04) 568 3109  
Facsimile: (04) 568 5236  
Email: nzsales@atlassteels.co.nz



**TECHNICAL SERVICES 1800 818 599**  
Email: [tech@atlassteels.com.au](mailto:tech@atlassteels.com.au)  
Email: [projects@atlassteels.com.au](mailto:projects@atlassteels.com.au)

**TEL: 1300 METALS**  
**[www.atlassteels.com.au](http://www.atlassteels.com.au)**